

UTEPO

Just make it simple



UTP7216E-POE-L2

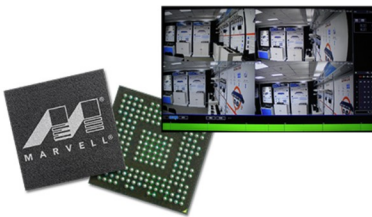
Security-purpose Industrial PoE Switch

Specially designed for HD IP camera data and PoE access

FEATURES

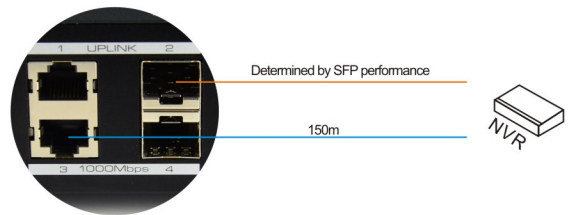
1 Industrial-Level Chip Superior Performance

Adopt industrial MARVELL chip solution, backplane bandwidth up to 70Gbps, convenient for data processing of surveillance system.



2 Hybrid Fiber and Ethernet Gigabit uplink

Gigabit hybrid fiber and Ethernet uplink ports design, SFP fiber port, convenient for remote transmission of system ; Ethernet port, convenient for local monitoring and data backup.



3 PoE+ 150m Downlink Ports

Provide 16x100Mbps 150m PoE+ downlink ports, meet needs of multi-channel PoE IP cameras; Support IEEE802.3 af/at standard, Max. 30W power, meet needs of high power cameras; Support IEEE802.3X full-duplex flow control and Auto MDI/MDIX function.



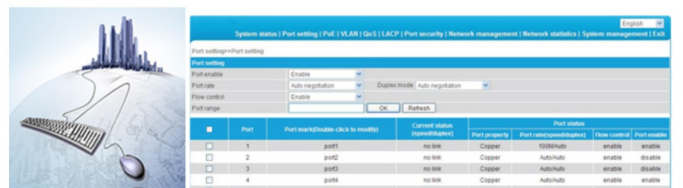
4 6KV Lightning protection Level 3 ESD

Provide 4x100Mbps 250m PoE+ downlink ports, meet needs of multi-channel PoE IP cameras; Support IEEE802.3 af/at standard, Max. 30W power, meet needs of high power cameras; Support IEEE802.3X full-duplex flow control and Auto MDI/MDIX function.



5 L2 Management

It features the L2 management function, including a range of brilliant items: VLAN settings, QoS management, link management, port security, flow statistics, RSTP, rate limiting , port mirroring, remote checking, camera reset, PoE output setup, MAC address binding, 802.1x certificates, IGMP Snooping, changeable Login account and IP Address setting, Logging Management, Mac table search, Email Notification, remote software upgrade and factory default settings.



Port	Port name	Port speed	Port duplex	Port status	Port mode	Port security	Port priority	Port rate	Port control	Port enable
1	port1	100Mbps	Full	enable	enable	enable	1	100Mbps	enable	enable
2	port2	100Mbps	Full	enable	enable	enable	1	100Mbps	enable	enable
3	port3	100Mbps	Full	enable	enable	enable	1	100Mbps	enable	enable
4	port4	100Mbps	Full	enable	enable	enable	1	100Mbps	enable	enable
5	port5	100Mbps	Full	enable	enable	enable	1	100Mbps	enable	enable