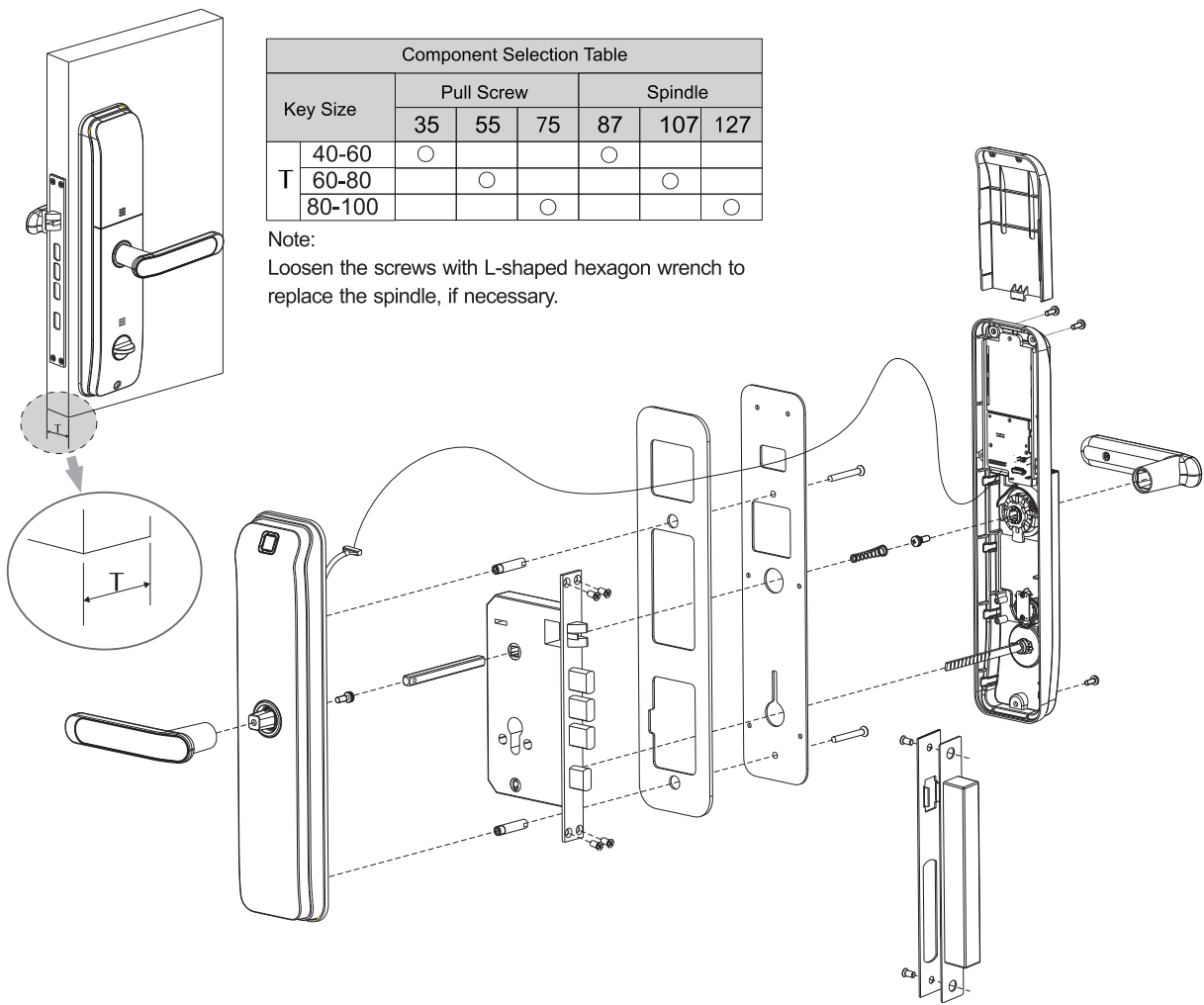


Smart Lock Installation Guide

v1.0.0

I Installation Drawing

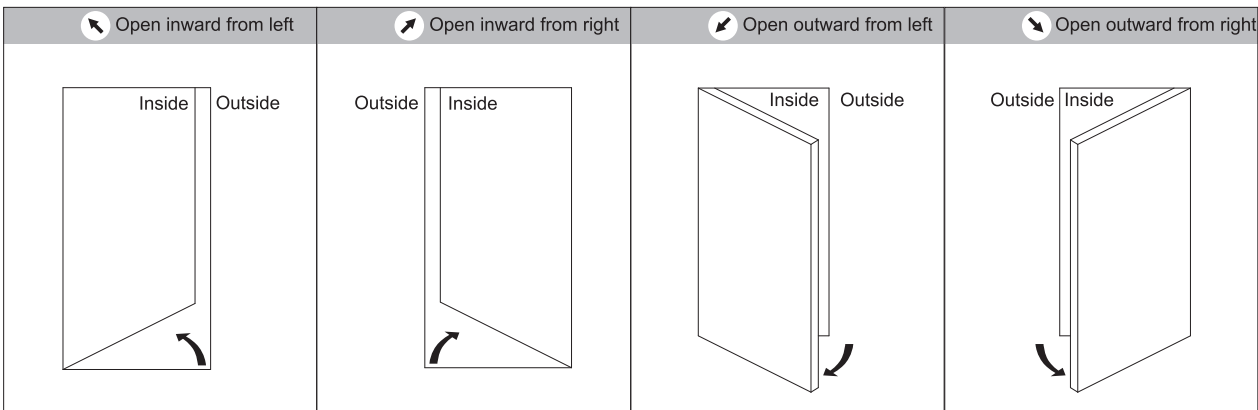
*Note: Door opens inward from left.



II Component List

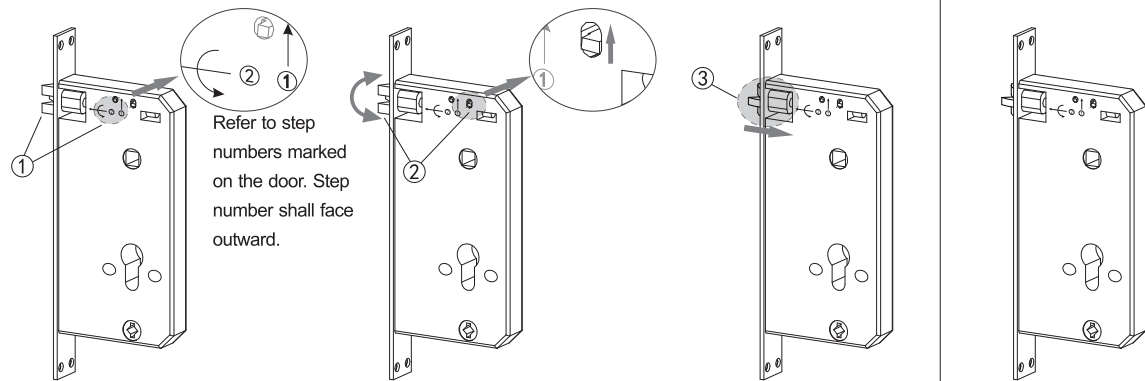
A	B	C	D	E	F	I	O
External panel	External silicone pad	Internal baseboard	Internal silicone pad	Internal panel	Lock body	Threaded pipe	M5*10 or ST4.2*16
							For metal door only For wooden door only
						J	Q
						L-shaped wrench	Key
					G	K	R
					User's manual	Card	Pull Screw
					H	N	S
					Hole drawing	Spring	M4*10

III Installation Environment



IV Changing Lock Direction

Illustrations

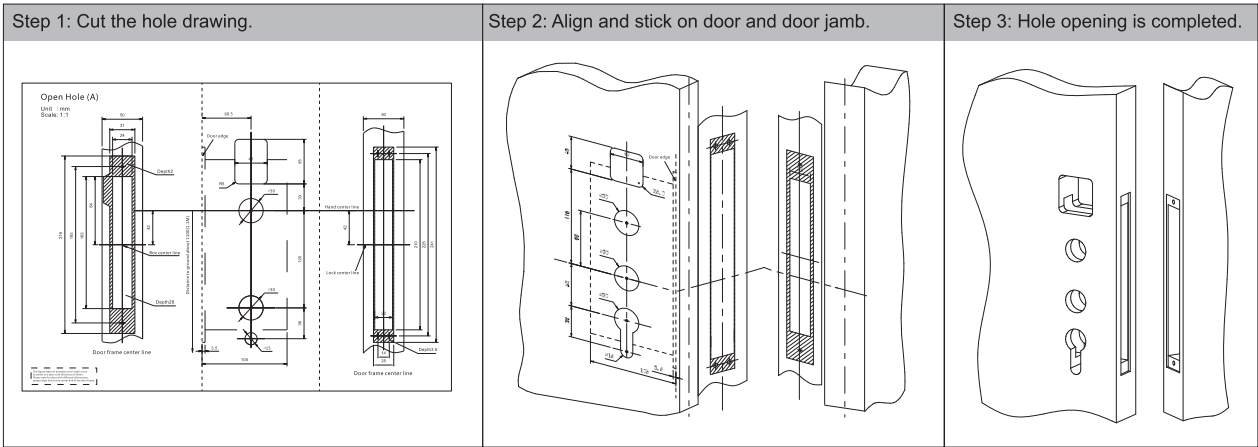


Procedure

* Note: Please confirm the door opening direction based on Installation Environment.
Step 1 The lock side marked with step number shall face outward. Latch bolt shall face upward, and its camber surface shall face inward as opening outward from right (and opening inward from left).
Step 2 Pull up key buckling, and latch bolt ejects out of lock body. Rotate the bolt for 180°.
Step 3 Insert security bolt into lock body, and then push the entire latch bolt into the lock for buckling.
Step 4 After adjustment, check whether the latch bolt can be ejected smoothly.

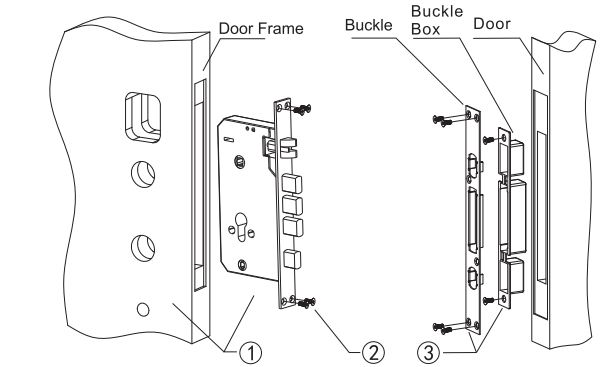
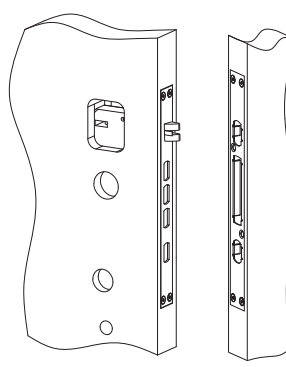
V Opening Hole

*Note: Door opens inward from left.

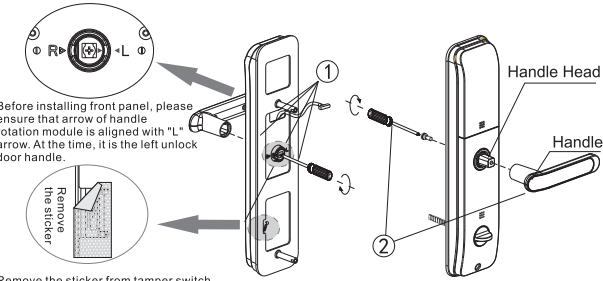
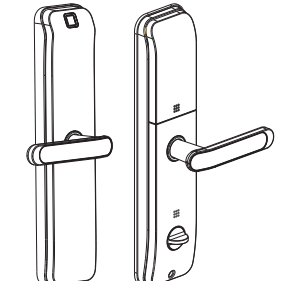
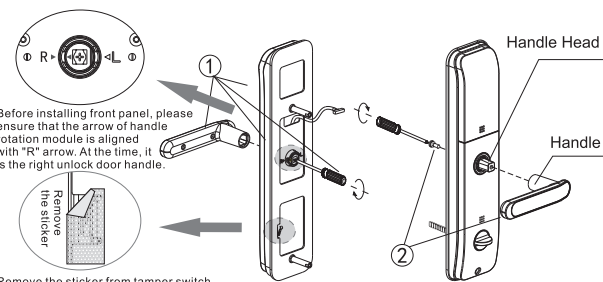
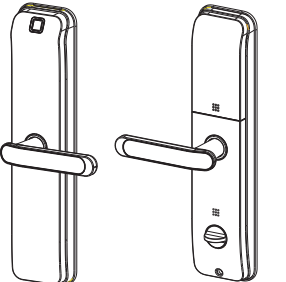


6 Installing Lock Body

*Note: Door opens inward from left.

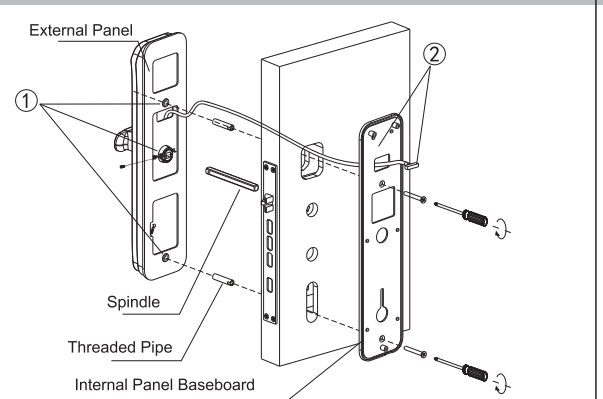
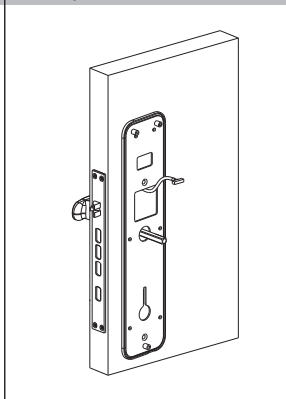
Illustrations	Procedure	Completion Status
	<ol style="list-style-type: none">1. Install the lock body into the door on which the hole has been opened.2. Fix the lock body in the door with screw (O).3. Fix buckle box and buckle on door frame with screw (O). <p>* Note: Confirm unlock function.</p> <p>Note: Adjust buckle position according to actual conditions. It is recommended to install the lock first, and then install buckle box and buckle.</p>	

7 Installing Handle

Left Unlock Door Handle Installation	Completion Status	Procedure
		<p>*Note: Before installation, please confirm the door opening direction and door thickness, and remove the sticker from tamper switch.</p> <p>① Change direction of handle on external panel:</p> <ol style="list-style-type: none">1. Loosen the screws in the handle with cross screwdriver, and change the handle direction according to actual door opening direction.2. Please ensure that arrow of internal handle rotation module is aligned with the letter mark arrow, and is consistent with handle direction.3. Fix the screws in the handle. <p>*Note: Door opens from right with the arrow aligned with "R" and from left with the arrow aligned with "L".</p> <p>② Change direction of handle on internal panel:</p> <p>Loosen the screws in the handle, change the handle direction, and then fix the screws in the handle.</p> <p>*Note: The handle shall be fixed firmly.</p>
Right Unlock Door Handle Installation	Completion Status	Procedure
		<p>*Note: Before installation, please confirm the door opening direction and door thickness, and remove the sticker from tamper switch.</p> <p>① Change direction of handle on external panel:</p> <ol style="list-style-type: none">1. Loosen the screws in the handle with cross screwdriver, and change the handle direction according to actual door opening direction.2. Please ensure that arrow of internal handle rotation module is aligned with the letter mark arrow, and is consistent with handle direction.3. Fix the screws in the handle. <p>*Note: Door opens from right with the arrow aligned with "R" and from left with the arrow aligned with "L".</p> <p>② Change direction of handle on internal panel:</p> <p>Loosen the screws in the handle, change the handle direction, and then fix the screws in the handle.</p> <p>*Note: The handle shall be fixed firmly.</p>

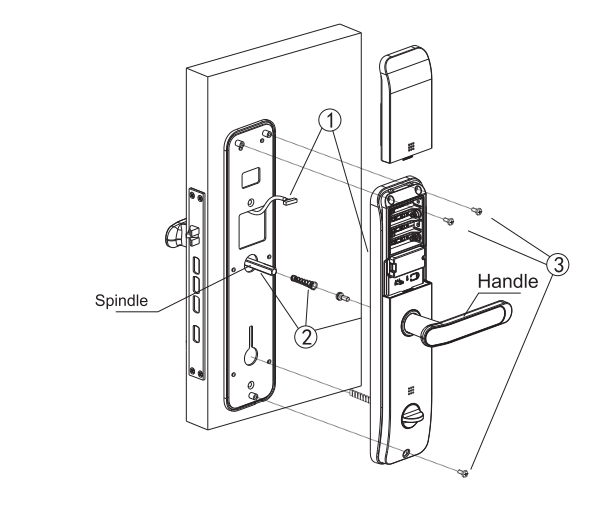
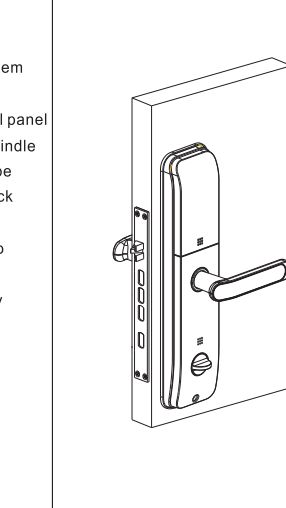
8 Installing External Panel

*Note: Door opens inward from left.

Illustrations	Procedure	Completion Status
	<ol style="list-style-type: none">① Select a suitable spindle according to the door, use L-shaped wrench (number j in Component List) to fix spindle (T) onto turning block of front panel. Then, fix threaded pipe (I) pipe onto front panel, and paste silicone pad (B) onto external panel baseboard.② Paste internal silicone pad (D) onto internal panel baseboard, close external panel against door, and lead 20-pin plug through internal panel baseboard.③ With screw (R), fix the external panel and internal panel baseboard onto the door. <p>*Note: Screw (R) is shorter than door thickness.</p>	

9 Installing Internal Panel

*Note: Door opens inward from left.

Illustrations	Procedure	Completion Status
	<ol style="list-style-type: none">① Insert 20-pin plug into the slot under battery box.② Put spring (N) into handle hole of internal panel (big end faces inward); align handle with spindle and install them. Rotate the rotary knob to be horizontal, and insert the flat rod into the lock cylinder hole.③ With screw (S), fix the internal panel onto internal panel baseboard. <p>*Note: When dead bolt is not ejected, rotary knob is horizontal and can be rotated smoothly.</p>	

10 Check List

After installation, check against the following list while the door is open:

- ☐ Check whether there is a voice prompted after batteries are installed, and all button indicators are turned on.
- ☐ Lift internal panel handle, and the security bolt can be ejected. Press it down to retract security bolt and latch bolt.
- ☐ Lift external panel handle, and the security bolt can be ejected. When pressing it down, the security bolt and latch bolt cannot be retracted.
- ☐ Internal panel knob is horizontal when the bolt is retracted. The bolt can be ejected and retracted smoothly when rotating the knob.
- ☐ At the bottom of external panel, insert the key and rotate. Meanwhile, press down external panel handle, the latch bolt and security bolt can be retracted.
- ☐ Close the door, lift the handle and security bolt ejects normally.
- ☐ All screws are fastened.
- ☐ Power on the lock to activate the touch panel (put your palm/hand back onto the touch panel). After the button turns on, enter initial password (123456#). When you hear a prompted voice, press external panel handle to retract security bolt and latch bolt.
- ☐ Make sure that the door cannot be pushed open after closed.
- ☐ After installation is completed, check whether doorbell works normally.